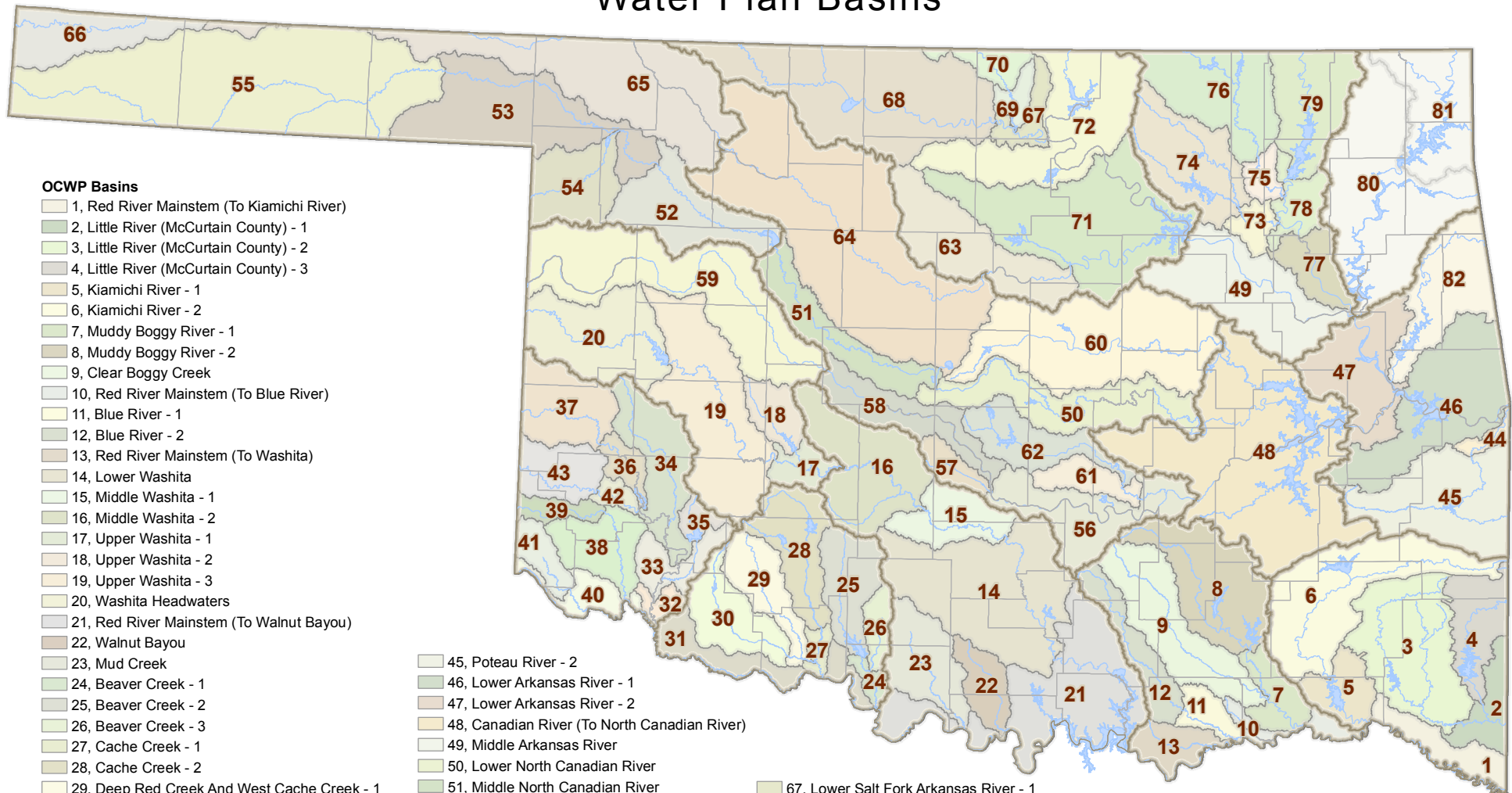


Oklahoma Comprehensive Water Plan (OCWP)

Water Plan Basins

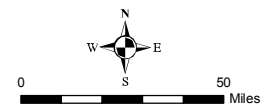


OCWP Basins

- 1, Red River Mainstem (To Kiamichi River)
- 2, Little River (McCurtain County) - 1
- 3, Little River (McCurtain County) - 2
- 4, Little River (McCurtain County) - 3
- 5, Kiamichi River - 1
- 6, Kiamichi River - 2
- 7, Muddy Boggy River - 1
- 8, Muddy Boggy River - 2
- 9, Clear Boggy Creek
- 10, Red River Mainstem (To Blue River)
- 11, Blue River - 1
- 12, Blue River - 2
- 13, Red River Mainstem (To Washita)
- 14, Lower Washita
- 15, Middle Washita - 1
- 16, Middle Washita - 2
- 17, Upper Washita - 1
- 18, Upper Washita - 2
- 19, Upper Washita - 3
- 20, Washita Headwaters
- 21, Red River Mainstem (To Walnut Bayou)
- 22, Walnut Bayou
- 23, Mud Creek
- 24, Beaver Creek - 1
- 25, Beaver Creek - 2
- 26, Beaver Creek - 3
- 27, Cache Creek - 1
- 28, Cache Creek - 2
- 29, Deep Red Creek And West Cache Creek - 1
- 30, Deep Red Creek And West Cache Creek - 2
- 31, Red River Mainstem (To North Fork of Red)
- 32, Lower North Fork Red River - 1
- 33, Lower North Fork Red River - 2
- 34, Lower North Fork Red River - 3
- 35, Lower North Fork Red River - 4
- 36, Upper North Fork Red River - 1
- 37, Upper North Fork Red River - 2
- 38, Salt Fork Red River - 1
- 39, Salt Fork Red River - 2
- 40, Prairie Dog Town Fork Red River - 1
- 41, Prairie Dog Town Fork Red River - 2
- 42, Elm Fork Red River - 1
- 43, Elm Fork Red River - 2
- 44, Poteau River - 1

- 45, Poteau River - 2
- 46, Lower Arkansas River - 1
- 47, Lower Arkansas River - 2
- 48, Canadian River (To North Canadian River)
- 49, Middle Arkansas River
- 50, Lower North Canadian River
- 51, Middle North Canadian River
- 52, Upper North Canadian River - 1
- 53, Upper North Canadian River - 2
- 54, Upper North Canadian River - 3
- 55, North Canadian Headwaters
- 56, Lower Canadian River - 1
- 57, Lower Canadian River - 2
- 58, Middle Canadian River
- 59, Upper Canadian River
- 60, Deep Fork River
- 61, Little River - 1
- 62, Little River - 2
- 63, Lower Cimarron River
- 64, Middle Cimarron River
- 65, Upper Cimarron River
- 66, Cimarron Headwaters

- 67, Lower Salt Fork Arkansas River - 1
- 68, Upper Salt Fork Arkansas River
- 69, Lower Salt Fork Arkansas River - 2
- 70, Lower Salt Fork Arkansas River - 3
- 71, Arkansas River - Cimarron Rivers to Keystone Lake
- 72, Arkansas River Mainstem (To Kansas State Line)
- 73, Bird Creek - 1
- 74, Bird Creek - 2
- 75, Caney River - 1
- 76, Caney River - 2
- 77, Verdigris River (To Oologah Dam) - 1
- 78, Verdigris River (To Oologah Dam) - 2
- 79, Verdigris River (To Kansas State Line)
- 80, Grand (Nesho) River - 1
- 81, Grand (Nesho) River - 2
- 82, Illinois River



For more information please visit the OWRB's web site at: (<http://www.owrb.ok.gov>) 10/04/2011