

36.55613°N 96.11624°W  
Normal Elevation: 768 ft

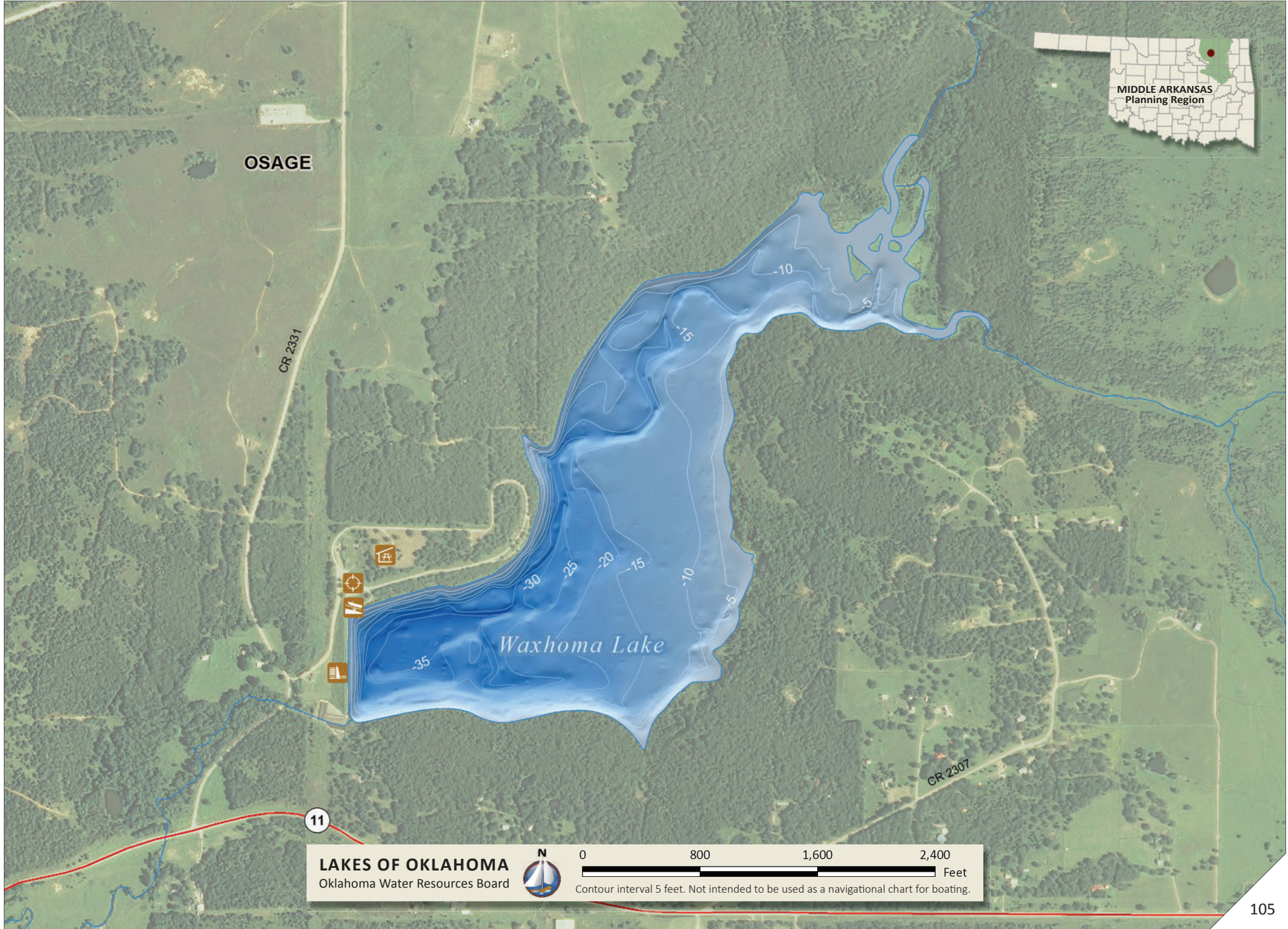
Area: 128 ac  
Shoreline: 3.6 mi

Capacity: 1,832 ac-ft  
Maximum Depth: 39.9 ft

City of  
Barnsdall

# Waxhoma

CITY OF BARNSDALL



LAKES OF OKLAHOMA  
Oklahoma Water Resources Board



0 800 1,600 2,400 Feet  
Contour interval 5 feet. Not intended to be used as a navigational chart for boating.