

34.88962°N 99.29879°W  
Normal Elevation: 1,559 ft

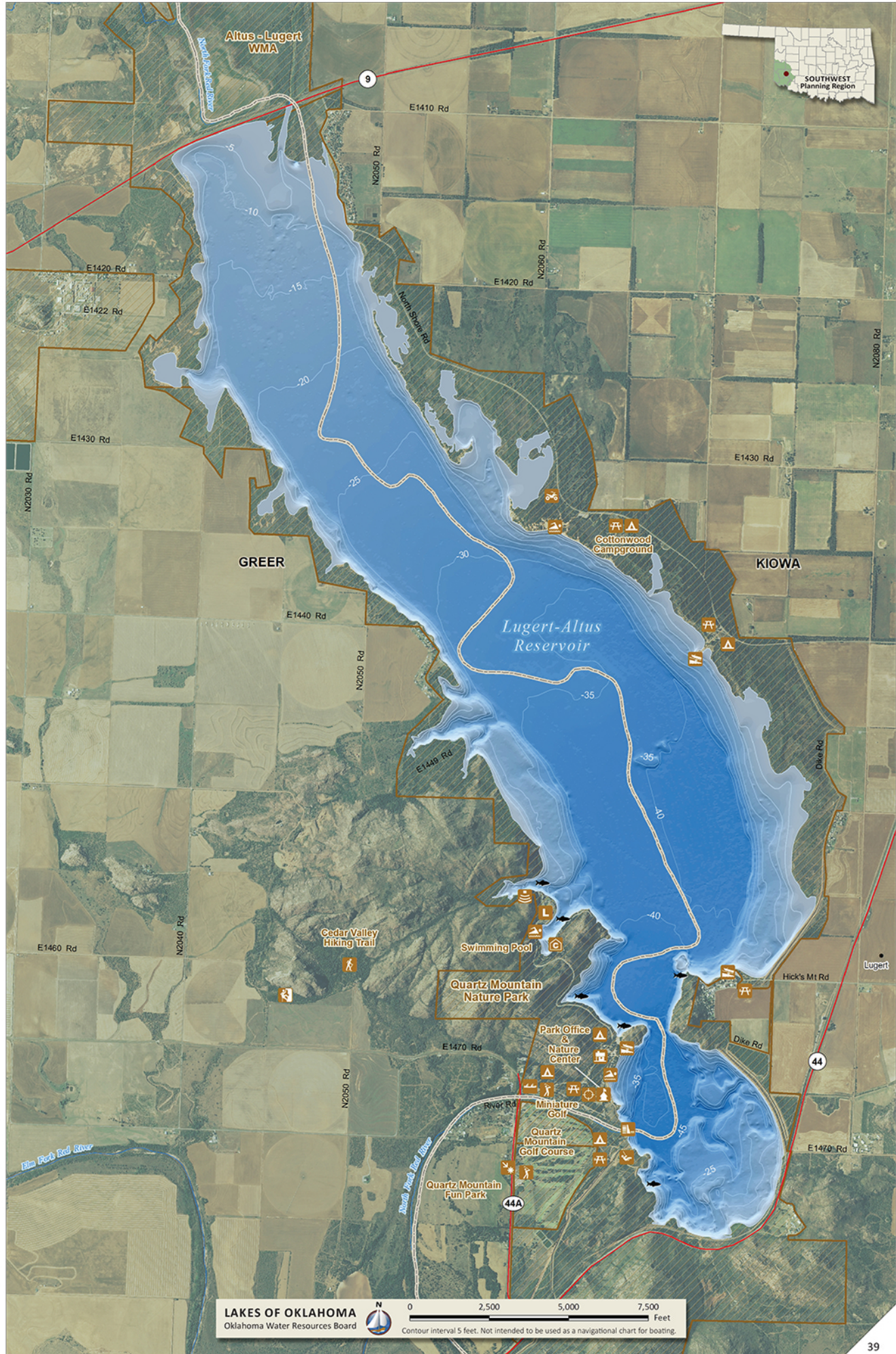
Area: 5,089 ac  
Shoreline: 32 mi

Capacity: 122,516 ac-ft  
Maximum Depth: 48.5 ft



# Lugert-Altus

US BUREAU OF RECLAMATION



LAKES OF OKLAHOMA  
Oklahoma Water Resources Board



0 2,500 5,000 7,500 Feet  
Contour interval 5 feet. Not intended to be used as a navigational chart for boating.