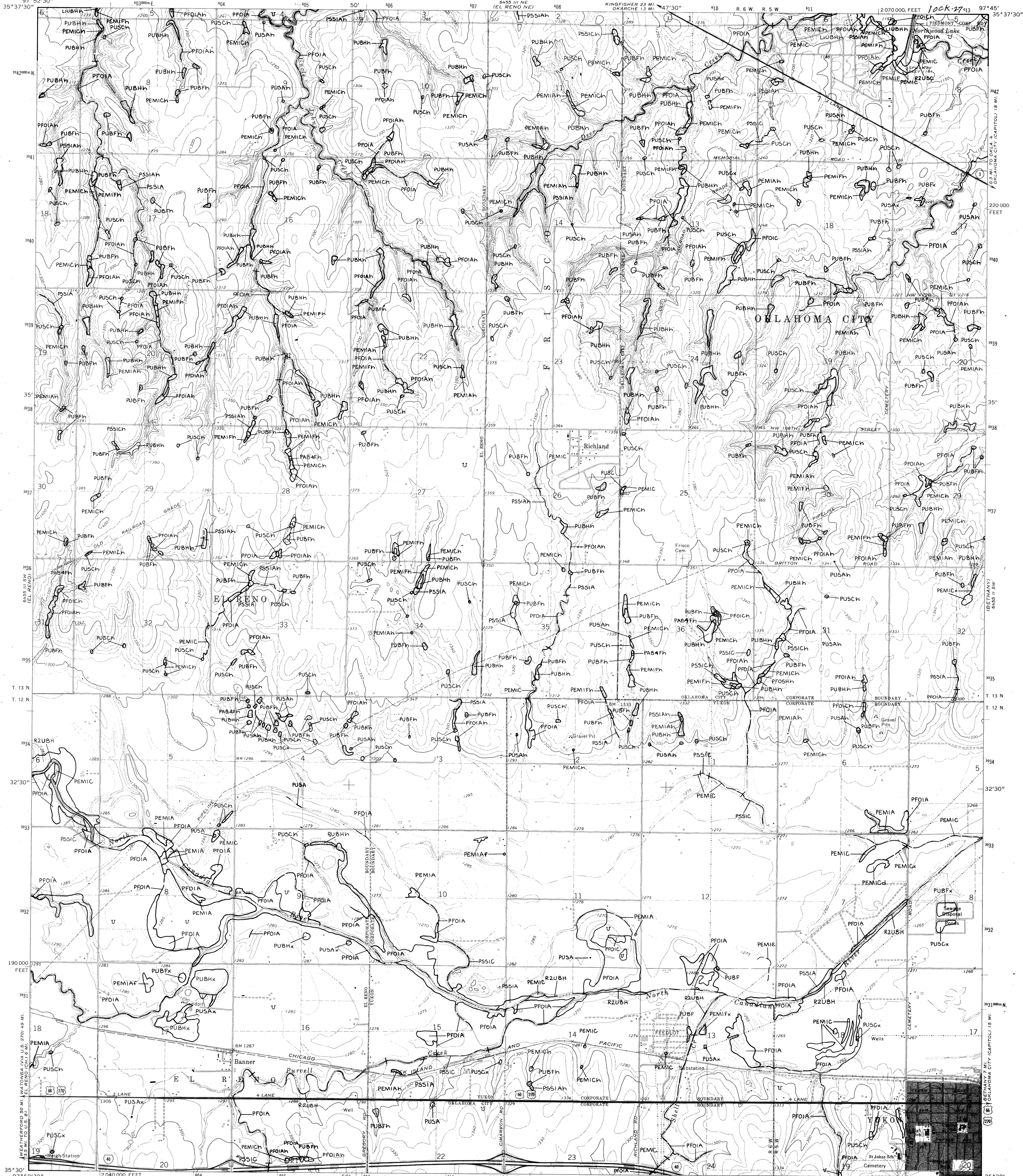
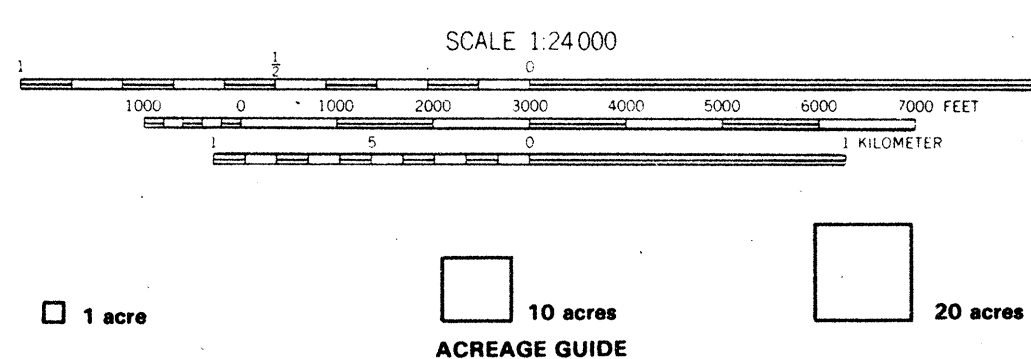


NATIONAL WETLANDS INVENTORY
UNITED STATES DEPARTMENT OF THE INTERIOR

35° 53' 30" 97° 52' 30" 5030000E N04 97° 52' 30" N05 50' N06 6455 III NE (EL RENO NE) 47° 30" KINGFISHER 23 MI OKARCHIE 13 MI R. G. W. R. S. W. 2070.000 FEET 100K-27 97° 45' 35° 53' 30"



OKLAHOMA CITY NW
OKLAHOMA CITY NORTH



Other information including a narrative report concerning the wetland resources depicted on this document may be available. For information, contact:

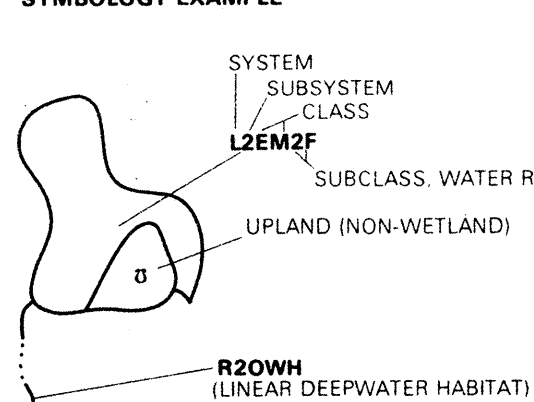
**Regional Director (ARDE) Region II
U.S. Fish and Wildlife Service
P.O. Box 1306
Albuquerque, New Mexico 87103**

SPECIAL NOTE

This document was prepared primarily by stereoscopic analysis of high altitude aerial photographs. Wetlands were identified on the photographs based on vegetation, visible hydrology, and geographic location. The project was titled "Wetlands and Deepwater Habitats of the United States (FWS/OBS - 79/31 December 1979). The aerial photographs typically reflect conditions during the specific year and season when they were taken. In addition, there are many factors that can affect the interpretation of the photographs. Thus, a detailed on the ground and historical analysis of a single site may result in a revision of the wetland boundaries established through photographic interpretation. In addition, some small wetlands and those with dense forest cover may not be included on this document.

in this document. **Persons** intending to engage in activities involving modifications within or adjacent to wetland areas should seek the advice of appropriate Federal, State, and local regulatory agencies with jurisdiction over wetlands and define and describe wetlands in a different manner than that used in this inventory. There is no attempt, in either the design or products of this inventory, to define the limits of proprietary jurisdiction of any Federal, State or local government or to establish the geographical scope of the regulatory programs of government agencies. **Persons intending to engage in activities involving modifications within or adjacent to wetland areas should seek the advice of appropriate Federal, State, and local regulatory agencies with jurisdiction over wetlands and define and describe wetlands in a different manner than that used in this inventory.** There is no attempt, in either the design or products of this inventory, to define the limits of proprietary jurisdiction of any Federal, State or local government or to establish the geographical scope of the regulatory programs of government agencies. **Persons intending to engage in activities involving modifications within or adjacent to wetland areas should seek the advice of appropriate Federal, State, and local regulatory agencies with jurisdiction over wetlands and define and describe wetlands in a different manner than that used in this inventory.**

SYMBOLGY EXAMPLE



U — Primarily represents upland areas, but may include unclassified wetlands such as man-modified areas, non photo-identifiable areas and/or unintentional omissions.

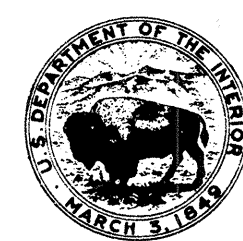
NOTES TO THE USER

- Wetlands which have been field examined are indicated on the map by an asterisk (*).
- Additions or corrections to the wetlands information displayed on the map are solicited. Please forward such information to the address indicated.
- Subsystems, Classes, Subclasses, and Water Regimes in *italics* were developed specifically for NATIONAL WETLANDS INVENTORY mapping.
- Subsystems designated as *RS4B*, *RS4BW*, *RS4SB*, *RS4SBW* (INTERMITTENT STREAMS) may not meet the definition of wetland.
- This map uses the class Unconsolidated Shore (US).
- On earlier NWI maps that class was designated Beach/Bar (BB), or Flat (FL). Subclasses remain the same in both.

AERIAL PHOTOGRAPHY

DATE: 9 / 1 / 81 DATE: / /
SCALE: 1:58 000 SCALE:
TYPE: CIR TYPE:

RICHLAND, OKLA.



U.S. DEPARTMENT OF THE INTERIOR
FISH AND WILDLIFE SERVICE
Prepared by National Wetlands Inventory

1989