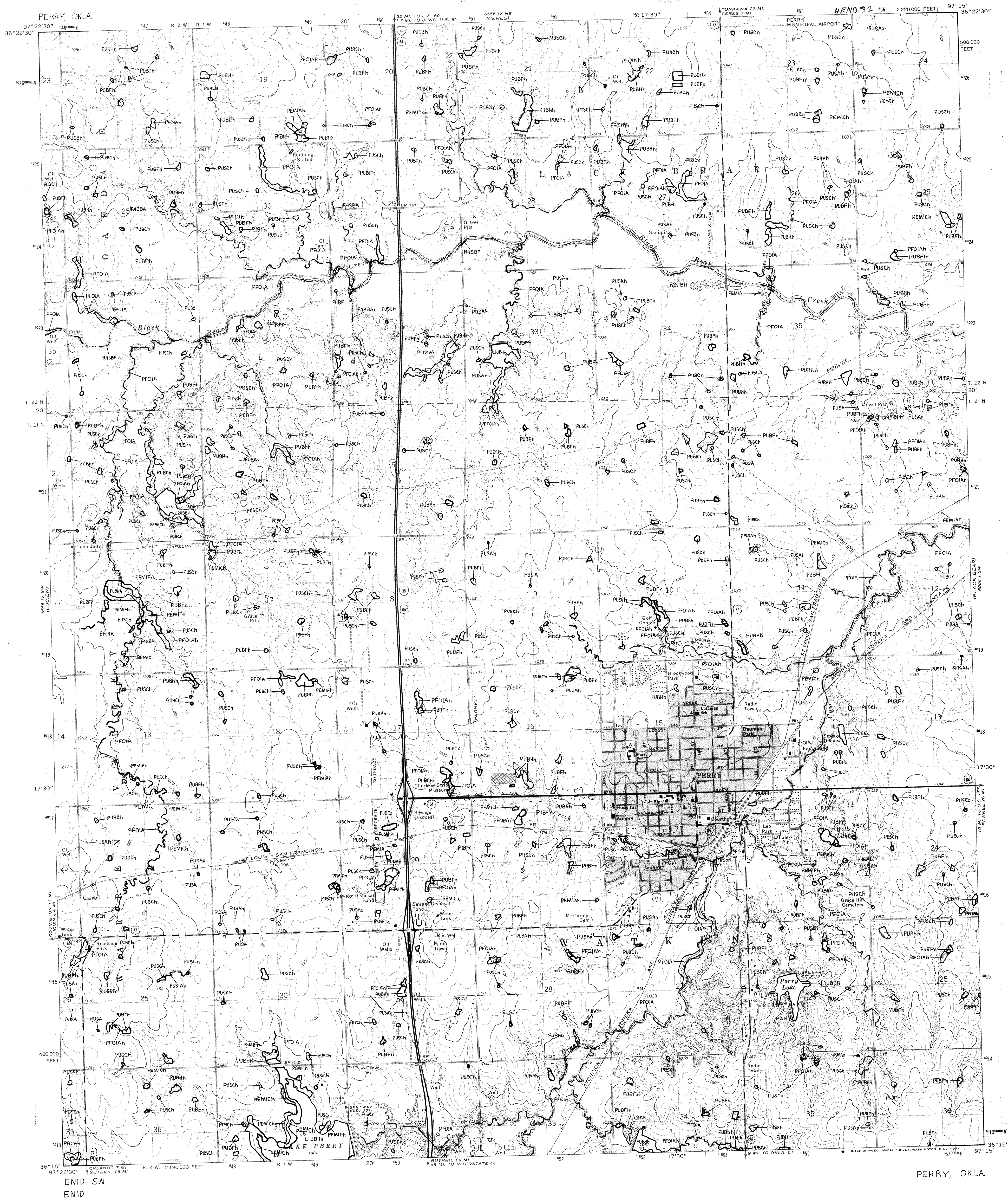


PERRY 1987

NATIONAL WETLANDS INVENTORY
UNITED STATES DEPARTMENT OF THE INTERIOR

222 South Houston
Suite A
Houston, TX 77058



NOTES TO THE USER

- NOTES TO THE USER**
- Wetlands which have been field examined are indicated on the map by an asterisk (*).
 - Additions or corrections to the wetlands information displayed on this map are solicited. Please forward such information to the address indicated.
 - Subsystems, Classes, Subclasses, and Water Regimes in *italics* were developed specifically for NATIONAL WETLANDS INVENTORY mapping.
 - Some areas designated as R4SB, R4SBW, or R4SBJ (INTERMITTENT STREAMS) may not meet the definition of wetland.
- This map uses the class Unconsolidated Shore (US).
- On earlier NWI maps that class was designated Beach/Bar (BB), or Flat (FL). Subclasses remain the same in both versions.



U.S. DEPARTMENT OF THE INTERIOR
FISH AND WILDLIFE SERVICE
Prepared by National Wetlands Inventory

SPECIAL NOTE

SPECIAL NOTE

This document was prepared primarily by stereoscopic analysis of high altitude aerial photographs. Wetlands were identified on the photographs based on vegetation, visible hydrology, and geography in accordance with **Classification of Wetlands and Deepwater Habitats of the United States (FWS/OBS - 79/31 December 1979)**. The aerial photographs typically reflect conditions during the specific year and season when they were taken. In addition, there is a margin of error inherent in the use of the aerial photographs. Thus, a detailed on the ground and historical analysis of a single wetland may result in a revision of the wetland classification established through photographic interpretation. In addition, some small wetlands and those obscured by dense forest cover may not be included on this document.

the document. State and local regulatory agencies with jurisdiction over wetlands may define and describe wetlands in a different manner than that used in this inventory. There is no attempt, in either the design or products of this inventory, to define the limits of proprietary jurisdiction of any Federal, State or local government or to establish the geographical scope of the regulatory programs of government agencies. Persons intending to engage in activities involving wetlands within or adjacent to wetland areas should seek the advice of appropriate Federal, State or local agencies concerning specified agency regulatory programs and proprietary jurisdictions that may affect such activities.

SYMBOLGY EXAMPLE

SYSTEM
SUBSYSTEM
CLASS
L2EM2F
SUBCLASS, WATER REGIME
UPLAND (NON-WETLAND)

-R2OWH
(LINEAR DEEPWATER HABITAT)

0 - Primarily represents **upland** areas, but may include unclassified wetlands such as man-modified areas, non photo-identifiable areas and/or unintentional omissions.

AERIAL PHOTOGRAPHY

DATE: 10/1/81 DATE:
SCALE: 1:58000 SCALE:
TYPE: CIR TYPE:

1987