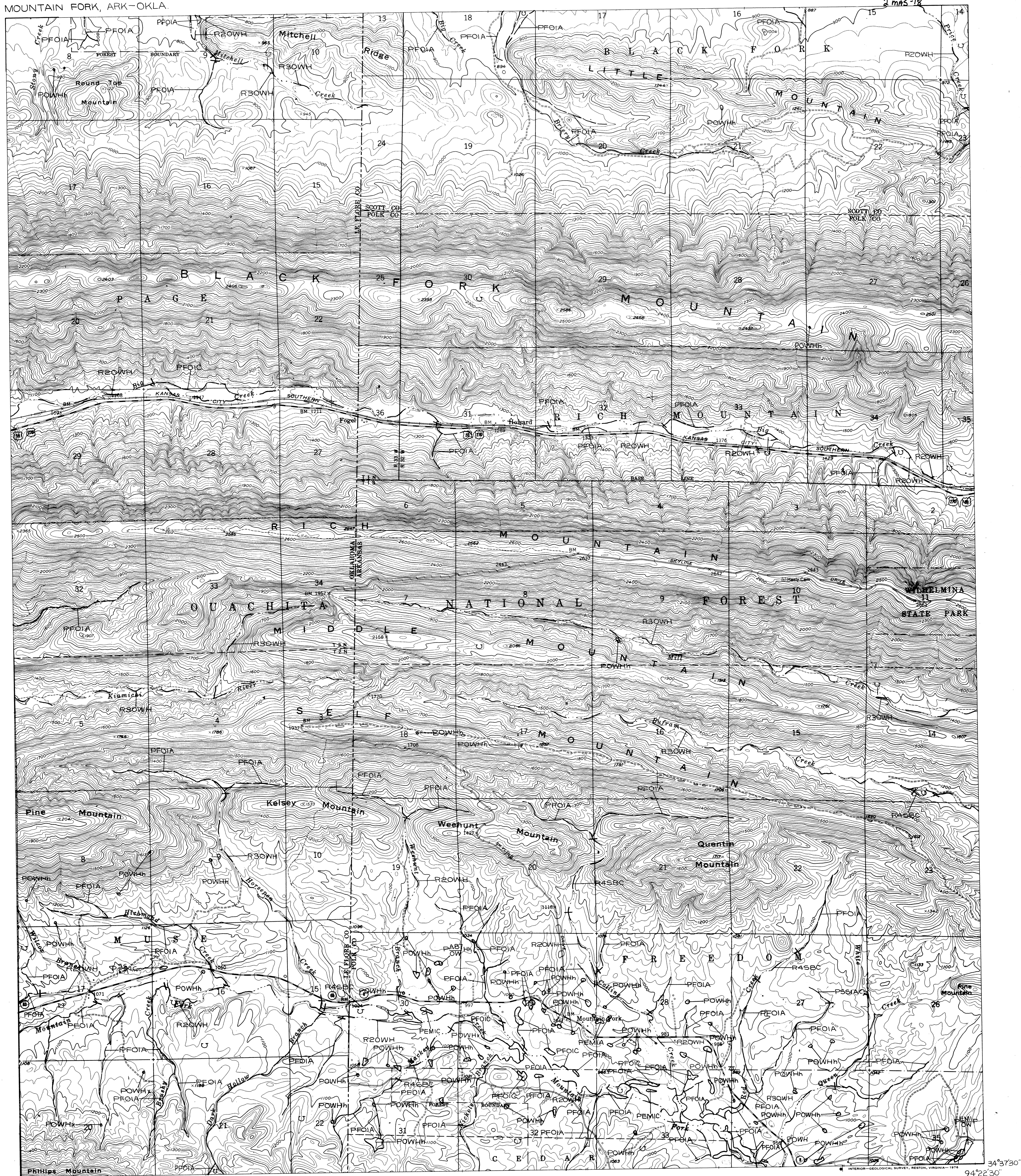



NATIONAL WETLANDS INVENTORY
UNITED STATES DEPARTMENT OF THE INTERIOR

2 MAS-18



 **U.S. FISH & WILDLIFE SERVICE**
222 S. Houston
Tulsa, OK 74127

MOUNTAIN FORK, ARK—OKLA.

SPECIAL NOTE

SYMBOLGY EXAMPLE

```

graph TD
    SYSTEM --> SUBSYSTEM
    SUBSYSTEM --> CLASS
    CLASS --> E2EM5N
    E2EM5N --> SUBCLASS_WATER_REGIME["SUBCLASS, WATER REGIME"]
    SUBCLASS_WATER_REGIME --> UPLAND["UPLAND (NON-WETLANDS)"]
    SUBCLASS_WATER_REGIME --> FARMED_WETLANDS["Pf or PK FARMED WETLANDS"]
    FARMED_WETLANDS --> CONTROLLED_WATER_REGIMES["CONTROLLED WATER REGIMES"]
  
```

NOTES TO THE USER

- Wetlands which have been field examined are indicated on the map by an asterisk (*).
- Dominance type (either vegetative or sedentary animal) can be added to the map by the interested user.
- Additions or corrections to the wetlands information displayed on this map are solicited. Please forward such information to the address indicated.
- Some areas designated R4SB, R4SBW, or R4SBJ (intermittent streams) may not meet the definition of wetlands.

AERIAL PHOTOGRAPHY

DATE: 3 / / 80

SCALE: 1:58 000

TYPE: CIR

DATE: / /

SCALE: _____

TYPE: _____

Other information concerning the wetland resources depicted on this document may be available. For information, contact:
Regional Director (ARDE) Region II
U.S. Fish and Wildlife Service
P.O. Box 1306
Albuquerque, New Mexico 87103

U.S. DEPARTMENT OF THE INTERIOR
FISH AND WILDLIFE SERVICE

Prepared by Office of Biological Services
for the National Wetlands Inventory

