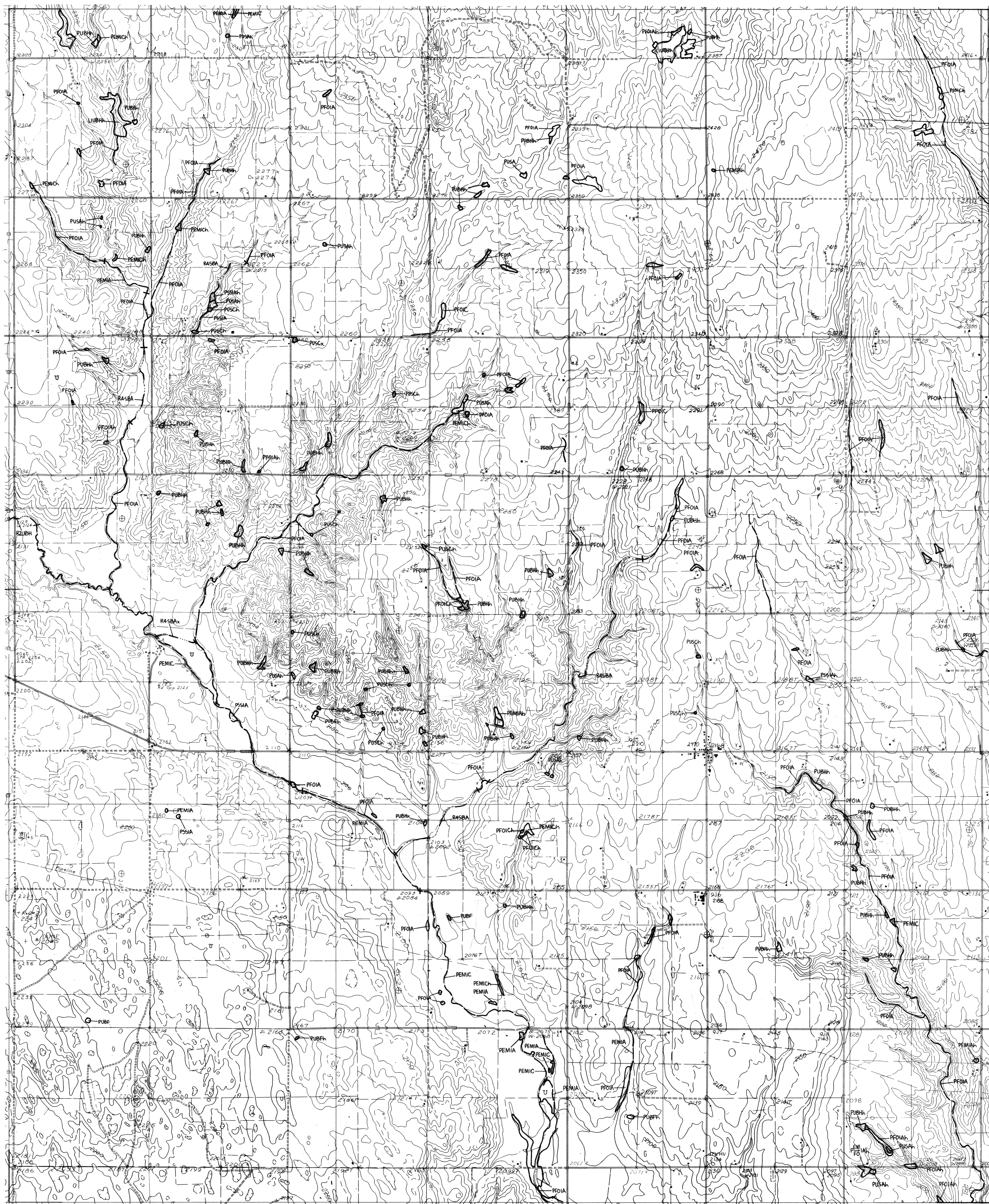


MAYFIELD NW 1989

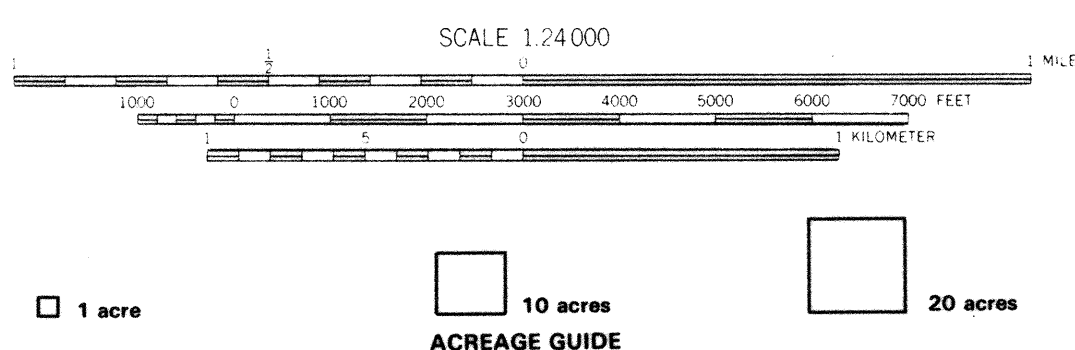
NATIONAL WETLANDS INVENTORY
UNITED STATES DEPARTMENT OF THE INTERIOR

MAYFIELD NW, OKLA.



CLINTON SW
ELK CITY

MAYFIELD NW, OKLA



Other information including a narrative report concerning the wetland resources depicted on this document may be available. For information, contact:

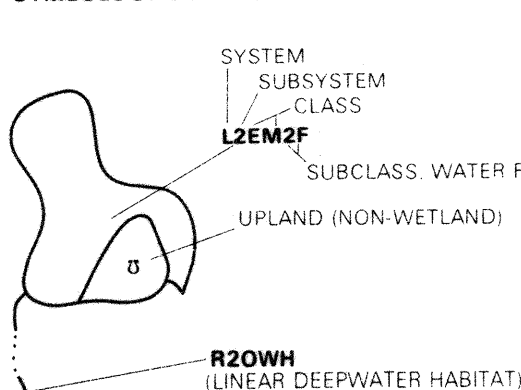
**Regional Director (ARDE) Region II
U.S. Fish and Wildlife Service
P.O. Box 1306
Albuquerque, New Mexico 87103**

SPECIAL NOTE

This document was prepared primarily by stereoscopic analysis of high altitude aerial photographs. Wetlands were identified on the photographs based on vegetation, water, and other features. The results of this analysis are the *Classification of Wetlands and Deepwater Habitats of the United States* (FWS/OBS - 79/31 December 1979). The aerial photographs typically reflect conditions during the specific year shown on the photograph. In addition, there is a margin of error inherent in the use of the aerial photographs. Thus, a detail on the ground and historical analysis of a single site may result in a revision of the wetland boundaries established through the photograph. In addition, some small waterways and those obscured by dense forest cover may not be included on this document.

Federal, State and local regulatory agencies with jurisdiction over wetlands may define and describe wetlands in a different manner than that used in this inventory. There is no attempt, in either the design or products of this inventory, to define the limits of proprietary jurisdiction of any Federal, State or local government or to establish the geographical scope of the regulatory programs of government agencies. **Persons intending to engage in activities involving modifications within or adjacent to wetland areas should seek the advice of appropriate Federal, State or local agencies concerning specific agency regulatory programs and proprietary jurisdiction that may affect such activities.**

SYMBOLGY EXAMPLE



NOTES TO THE USER

- Wetlands which have been field examined are indicated on the map by an asterisk (*).
- Additional correspondence for the wetlands information displayed on this map are solicited. Please forward such information to the address indicated.
- Subsystems, Classes, Subclasses, and Water Regimes in *Italics* were developed specifically for NATIONAL OCEANIC INVENTORY mapping
- Some areas designated as R4SB, R4SBW, OR R4SBJ (INTERMITTENT STREAMS) may not meet the definition of wetland.
- This map uses the class Unconsolidated Shore (US).
- On the NWI maps that class was designated Beach/Bar (BB), or Flat (FL). Subclasses remain the same in both versions.

AERIAL PHOTOGRAPHY

DATE: 11 / 83 DATE: _____
SCALE: 1:58 000 SCALE: _____
TYPE: CIR TYPE: _____



U.S. DEPARTMENT OF THE INTERIOR
FISH AND WILDLIFE SERVICE
Prepared by National Wetlands Inventory

1989