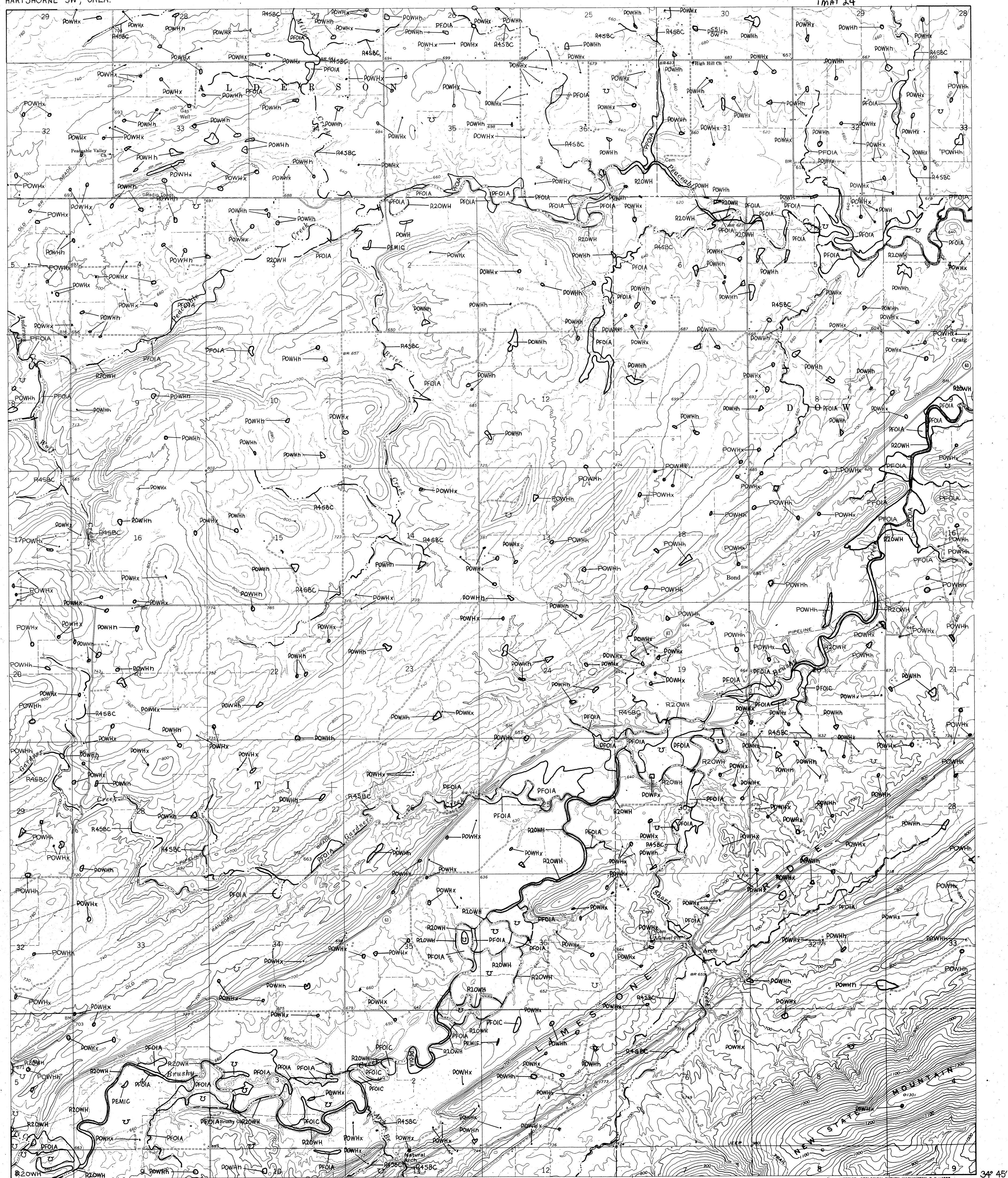


HARTSHORNE SW 1980

## NATIONAL WETLANDS INVENTORY

UNITED STATES DEPARTMENT OF THE INTERIOR

HARTSHORNE SW, OKLA.

MC ALESTER NW  
MC ALESTER

HARTSHORNE SW, OKLA.

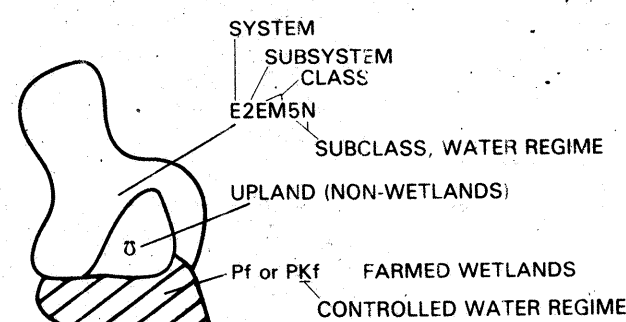
SCALE 1:24,000

## SPECIAL NOTE

This document was prepared primarily by stereoscopic analysis of high altitude aerial photographs. Wetlands were identified on the photographs based on vegetation, visible hydrology, and geography in accordance with *Classification of Wetlands and Deep-Water Habitats of the United States* (An Operational Draft, Cowardin, et al., 1977). The aerial photographs typically reflect conditions during the specific year and season when they were taken. In addition, there is a margin of error inherent in the use of the aerial photographs. Thus, a detailed on the ground and historical analysis of a single site may result in a revision of the wetland boundaries established through photographic interpretation. In addition, some small wetlands and those obscured by dense forest cover may not be included on this document.

Federal, State and local regulatory agencies with jurisdiction over wetlands may define and describe wetlands in a different manner than that used in this inventory. There is no attempt, in either the design or products of this inventory, to define the limits of proprietary jurisdiction of any Federal, State or local government or to establish the geographical scope of the regulatory programs of government agencies. Persons intending to engage in activities involving modifications within or adjacent to wetland areas should seek the advice of appropriate Federal, State or local agencies concerning specified agency regulatory programs.

## SYMBOLS EXAMPLE



## NOTES TO THE USER

- Wetlands which have been field examined are indicated on the map by an asterisk (\*).
- Dominance type (either vegetative or sedentary animal) can be added to the map by the interested user.
- Additions or corrections to the wetlands information displayed on this map are solicited. Please forward such information to the address indicated.
- Some areas designated R4SBC, R4SBW, or R4SBJ (intermittent streams) may not meet the definition of wetlands.

## AERIAL PHOTOGRAPHY

DATE: 4/78

SCALE: 1:58000

TYPE: CIR

DATE: / /

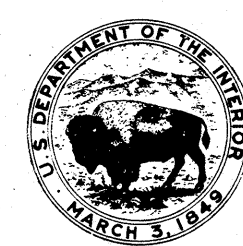
SCALE: / /

TYPE: / /

DATE: / /

Other information concerning the wetland resources depicted on this document may be available. For information, contact:

Regional Director (ARDE) Region II  
U.S. Fish and Wildlife Service  
P.O. Box 1306  
Albuquerque, New Mexico 87103



U.S. DEPARTMENT OF THE INTERIOR  
FISH AND WILDLIFE SERVICE

Prepared by Office of Biological Services  
for the National Wetlands Inventory