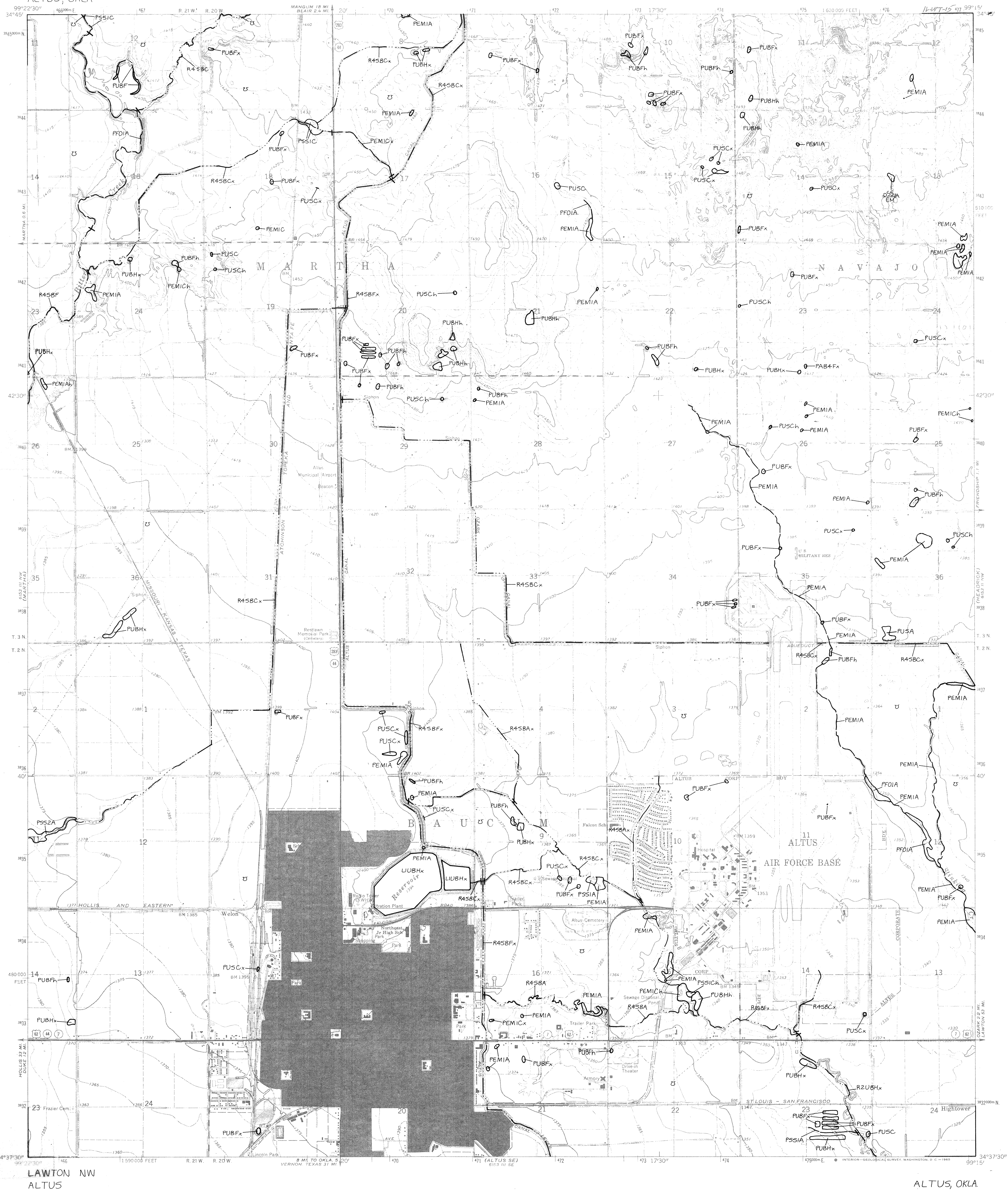


**NATIONAL WETLANDS INVENTORY**  
UNITED STATES DEPARTMENT OF THE INTERIOR

ALTUS, OKLA



☐ 1 acre

**10 acres**  
**ACREAGE GUIDE**

**20 acres**

Other information including a narrative report concerning the wetland resources depicted on this document may be available. For information, contact:

**Regional Director (ARDE) Region II  
U.S. Fish and Wildlife Service  
P.O. Box 1306  
Albuquerque, New Mexico 87103**

### SPECIAL NOTE

**SPECIAL NOTE**

This document was prepared primarily by stereoscopic analysis of high altitude aerial photographs. Wetlands were identified from the photographs based on vegetation, visible hydrology, and geography in accordance with **Classification of Wetlands and Deepwater Habitats of the United States (FWS/OBS - 79/31 December 1979)**. The aerial photographs typically reflect conditions during the specific year and season when they were taken. In addition, there is a margin of error inherent in the use of the aerial photographs. Thus, a detailed on the ground analysis of the wetlands and surrounding areas is required to establish the wetland boundaries established through photographic interpretation. In addition, some small wetlands and those obscured by dense forest cover may not be included on this document.

Federal, State and local regulatory agencies with jurisdiction over wetlands may define and describe wetlands in a different manner than that used in this inventory. There is no attempt, in either the design or products of this inventory, to define the limits of proprietary jurisdiction of any Federal, State or local government or to establish the geographical scope of the regulatory programs of government. Persons intending to engage in activities involving modifications within or adjacent to wetland areas should seek the advice of appropriate Federal, State or local agencies concerning specified agency regulatory programs and proprietary jurisdictions that may affect this document.

### SYMBOLGY EXAMPLE

Diagram illustrating the classification hierarchy for a wetland system:

- SYSTEM
- SUBSYSTEM
- CLASS: **L2EM2F**
- SUBCLASS: WATER REGIME
- UPLAND (NON-WETLAND)
- R2OWH** (LINEAR DEEPWATER HABITAT)

0 - Primarily represents upland areas, but may include unclassified wetlands such as man-modified areas, non

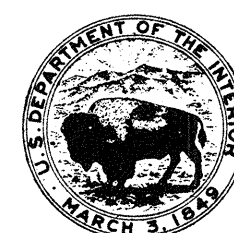
## NOTES TO THE USER

- NOTES TO THE USER
  - \* Wetlands which have been field examined are indicated on the map by an asterisk (\*)
  - \* Additions or corrections to the wetlands information displayed on this map are solicited. Please forward such information to the address indicated.
  - \* Subsystems, Classes, Subclasses, and Water Regimes in *italics* were developed specifically for NATIONAL WETLANDS INVENTORY mapping.
  - \* Some areas designated as R4SB, R4SBW, OR R4SBJ (INTERMITTENT STREAMS) may not meet the definition of wetland.
  - \* This map uses the class Unconsolidated Shore (US).
- On earlier NWI maps that class was designated Beach/Bar (BB), or Flat (FL). Subclasses remain the same in both versions.

## AERIAL PHOTOGRAPHY

DATE: 11/  /83      DATE:   /  /    
SCALE: 1:58 000      SCALE:   

ECOLOGICAL SERVICES  
222 S. HOUSTON, SUITE 1  
TULSA, OK 74127



**U.S. DEPARTMENT OF THE INTERIOR**  
**FISH AND WILDLIFE SERVICE**  
Prepared by National Wetlands Inventory

1989