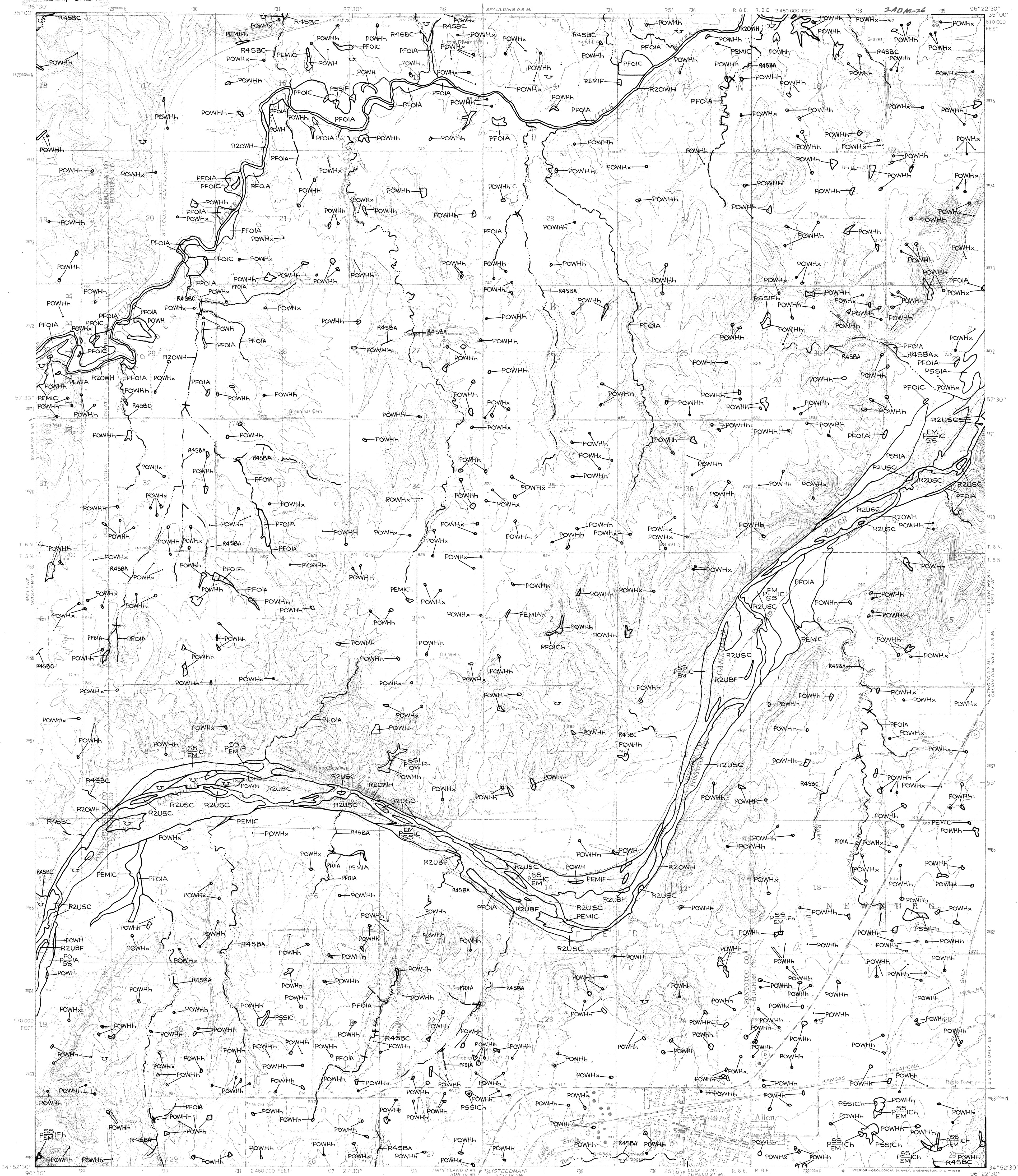


**NATIONAL WETLANDS INVENTORY**  
UNITED STATES DEPARTMENT OF THE INTERIOR

ALLEN, OKLA.



ALLEN, OKLA.

Other information concerning the wetland resources depicted on this document may be available. For information, contact:

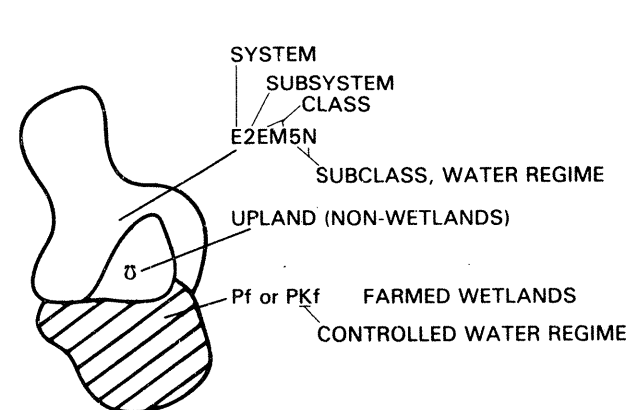
**Regional Director (ARDE) Region II  
U.S. Fish and Wildlife Service  
P.O. Box 1306  
Albuquerque, New Mexico 87103**

### SPECIAL NOTE

This document was prepared primarily by stereoscopic analysis of high altitude aerial photographs. Wetlands were identified on the photographs based on vegetation, hydrology, and geography in accordance with Classification of Wetlands and Deepwater Habitats (National Wetlands Inventory, U.S. Environmental Protection Agency, 1985). States (An Operational Draft), Cowardin, et al, 1977. The aerial photographs typically reflect conditions during the specific year and season when they were taken. In addition, there is a margin of error inherent in the use of the historical analysis of a single site may result in a revision of the wetland boundaries established through photographic interpretation. In addition, some small wetlands and those obscured by dense forest cover may not be included on this

Federal, State and local regulatory agencies with jurisdiction over wetlands may define and describe wetlands in a different manner than that used in this inventory. There is no attempt, in either the design or the production of this inventory, to define the limits of proprietary jurisdiction of any Federal, State or local government or to establish the geographical scope of the regulatory programs of government agencies. Persons intending to engage in activities involving modifications within or adjacent to wetland areas should seek the advice of appropriate Federal, State or local agencies concerning specified agency regulatory programs and proprietary jurisdictions that may affect such activities.

### SYMBOLGY EXAMPLE



## NOTES TO THE USER

- Wetlands which have been field examined are indicated on the map by an asterisk (\*).
- Dominance type (either vegetative or sedentary animal) can be added to the map by the interested user.
- Additions or corrections to the wetlands information displayed on this map are solicited. Please forward such information to the address indicated.
- Some areas designated R4SB, R4SBW, or R4SBJ (intermittent streams) may not meet the definition of wetlands.

## AERIAL PHOTOGRAPHY

DATE: 3 / / 82

SCALE: 1:65 000

TYPE: CIR

DATE:       /      /      

SCALE:       

TYPE: \_\_\_\_\_

DATE:      /      /     

SCALE: \_\_\_\_\_  
TYPE: \_\_\_\_\_



**U.S. DEPARTMENT OF THE INTERIOR**  
**FISH AND WILDLIFE SERVICE**

Prepared by Office of Biological Services  
for the National Wetlands Inventory

1990