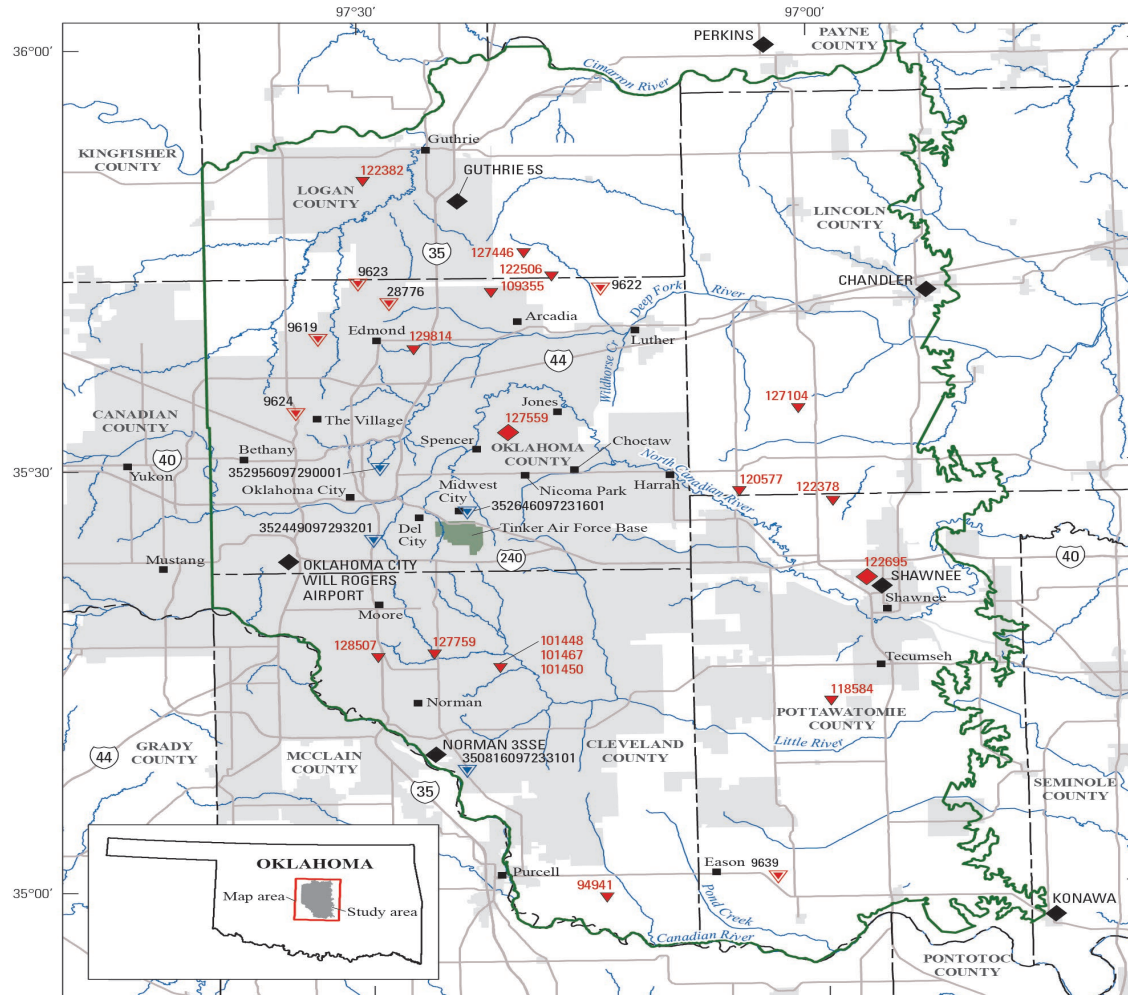
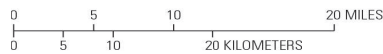


Attachment 1. Boundaries of the Garber-Wellington Groundwater Basin



Base from Horizon Systems Corporation, 2010, University of Oklahoma Center for Spatial Analysis, 2013, and U.S. Census Bureau, 2001 Universal Transverse Mercator projection, Zone 14 North American Datum of 1983

Central Oklahoma aquifer from Runkle, Christenson, and Rea, 1997



EXPLANATION

- Cities and incorporated places
- Extent of Central Oklahoma aquifer (study area)
- Cooperative observer station (precipitation, snowfall, and temperature) and identifier
- Continuous recorder well with Oklahoma Water Resources Board (OWRB) identifier
- Mesonet weather station and continuous recorder well with OWRB identifier
- Periodic water-level well with OWRB identifier
- Periodic water-level well with U.S. Geological Survey identifier
- City and name



Figure 1.
Garber
Wellington
aquifer extent;
including the
overlying
Hennessey
Group, shaded.