

July
August
September
2009

Kent Wilkins, OWRB
Drillers Program Coordinator



Published Quarterly
by the
Oklahoma Water
Resources Board
3800 N. Classen Blvd.
Oklahoma City, OK 73118

405-530-8800
FAX 405-530-8900

www.owrb.ok.gov

- Coordinator's Corner
- Garber-Wellington Wells Needed
- OWRB Enforcement Update
- 2009 Proposed Amendments to Chapter 35
- Arbuckle-Simpson Meeting Well Attended

Coordinator's Corner

Kent Wilkins, OWRB Drillers Program Coordinator

Greetings from the Oklahoma Water Resources Board and the Well Drillers program! I hope everyone is surviving the wet weather we have been experiencing. I have spoken with drillers from Guymon, Hollis, Tulsa, Oklahoma City, and Durant, and all have reported wet conditions. Optimistically, this rainfall provides excellent recharge for our groundwater basins.

The annual Governor's Water Conference will be held at the Sheraton-Reed Conference Center in Midwest City on November 3-5, 2009. To register or for more information about the conference, visit the OWRB's website at www.owrb.ok.gov.

The Oklahoma Ground Water Association's 8th annual conference and exhibition will be held at the Clarion Hotel in Oklahoma City on February 18-19, 2010. Please mark your calendar and plan on attending to support this organization, obtain continuing education credits, and gain some useful information for your business. The OGWA website address is <http://www.ogwa.biz>.

The Well Drillers and Pump Installers Advisory Council have been meeting since August to formulate proposed rule changes. We are currently proposing to allow completion of Direct Push monitoring wells, streamline the renewal process and allow online continuing education. If you have comments or would like to provide input into this process, please contact me or Theda at (405) 530-8800.

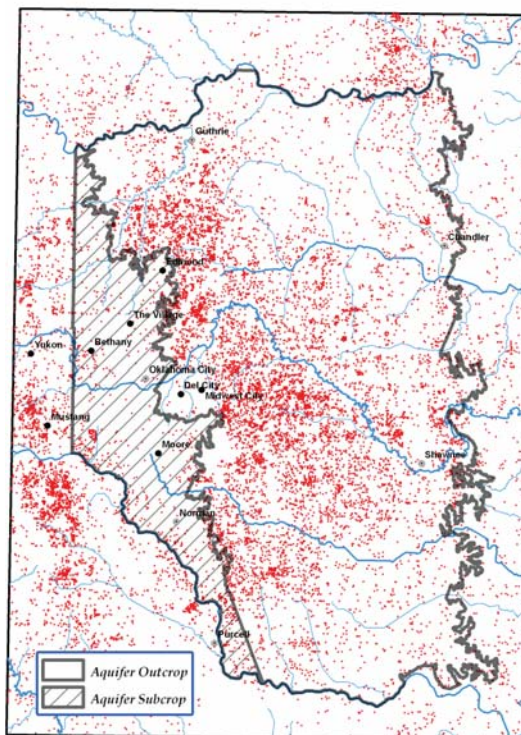
Garber-Wellington Wells Needed

The OWRB is currently working on the Garber-Wellington aquifer study to help determine the Maximum Annual Yield and Equal Proportionate Share of the aquifer. As part of the study, the OWRB is soliciting information from citizens whose property overlies the Garber-Wellington aquifer area (including Oklahoma City east to Shawnee and from Guthrie south to Purcell) on any unused groundwater wells that could be utilized to install continuous water-level recorders until the end of the project. Wells must be unused and completed within the upper 500 feet of the land surface.

If you have information regarding wells that might meet our criteria, please contact Chris Neel at the OWRB at 405-530-8800 or write to:

Oklahoma Water Resources Board
3800 N. Classen Blvd.
Oklahoma City, OK 73118
Attn: Christopher Neel

Garber-Wellington Aquifer
Shallow Well (<200 ft.) Distribution



0 5 10 20 Kilometers
0 5 10 20 Miles

Oklahoma Driller's Log 3rd Quarter, 2009

Duane A. Smith, Executive Director
Oklahoma Water Resources Board

Julie Cunningham, Division Chief
Planning & Management Division

Kent Wilkins
Field Services Section Head

To ensure the integrity of water well construction, and thus prevent potential pollution of state groundwaters, the OWRB supervises the state licensing program of pump installers and drillers of water supply, geothermal, observation, and monitoring wells. The OWRB has published the *Oklahoma Driller's Log* quarterly since 2001 as a source of information for the state's licensed water well drillers and pump contractors. Please e-mail your comments and article ideas to pubinfo@owrb.ok.gov. Visit the OWRB web site at www.owrb.ok.gov and click on "well drilling" for more information or to access the online well log filing program or the water well record search program.

OWRB Enforcement Update

The Oklahoma Water Resources Board (OWRB) conducted the following well driller and pump installer enforcement activities during the first three quarters of 2009:

- The OWRB took action against a licensed water well driller for multiple surface seal violations and non-submittal of well logs. Results of the action included an agreed settlement and consent order, a two month suspended license, a six month probationary period and a \$5,000 administrative fine.
- The OWRB took action against an unlicensed pump installer. Results of the action were an agreed settlement and consent order and a \$1,000 administrative fine for performing commercial pump installation without being licensed.

To report a violation, contact Kent Wilkins at 405-530-8800.

2009 Proposed Amendments to Chapter 35

The Well Drillers and Pump Installers Advisory Council and the Board are again proposing a number of amendments to Chapter 35 Rules and Regulations for 2010. The proposed amendments will go before the nine-member Oklahoma Water Resources Board for approval and then will be submitted to the Legislature for final approval. Highlights of the proposed rule changes at this time are as follows:

1. Monitoring wells may be constructed using Direct Push technology provided that a pre-packed screen is used, the borehole is three inches greater than the nominal casing diameter, a sand grout barrier is installed, annular and surface seals installed and the well depth is not greater than 50 feet.
2. The renewal process would be streamlined by requiring renewals to be submitted by May 31 and allowing a thirty day grace period until June 30. After June 30, the firm would be required to file a new application.
3. Online continuing education that has been pre-approved by the Board could be accepted for no more than four units of the required eight units for the two-year renewal period.

The Well Drillers and Pump Installers Council will meet again at 10:00 a.m. on November 4, 2009, for additional discussion and revisions. If anyone is interested in attending, please contact Kent Wilkins at (405) 530-8852 for more details.

Arbuckle-Simpson Meeting Well Attended

More than 400 interested citizens attended a public meeting on the Arbuckle-Simpson Hydrology Study on August 18th at the Pontotoc Technology Center in Ada. The informal meeting provided an opportunity for state and federal water experts to present study results and educate Oklahomans on hydrological and permitting concepts.

OWRB and U.S. Geological Survey staff presented detailed information on the aquifer's hydrogeology, including its unique and variable recharge and storage characteristics. The audience learned how varying flows impact the health of aquatic organisms. Details were given on the USGS's groundwater flow model, which simulates underground flow and discharge and allows researchers to estimate how large-scale groundwater withdrawals could affect streamflow.

The meeting served as a vital forum through which the OWRB could obtain input on management strategies that will guide future use of the Arbuckle-Simpson aquifer while protecting the integrity of springs and streams that provide numerous economic, recreational, and environmental benefits to the area.