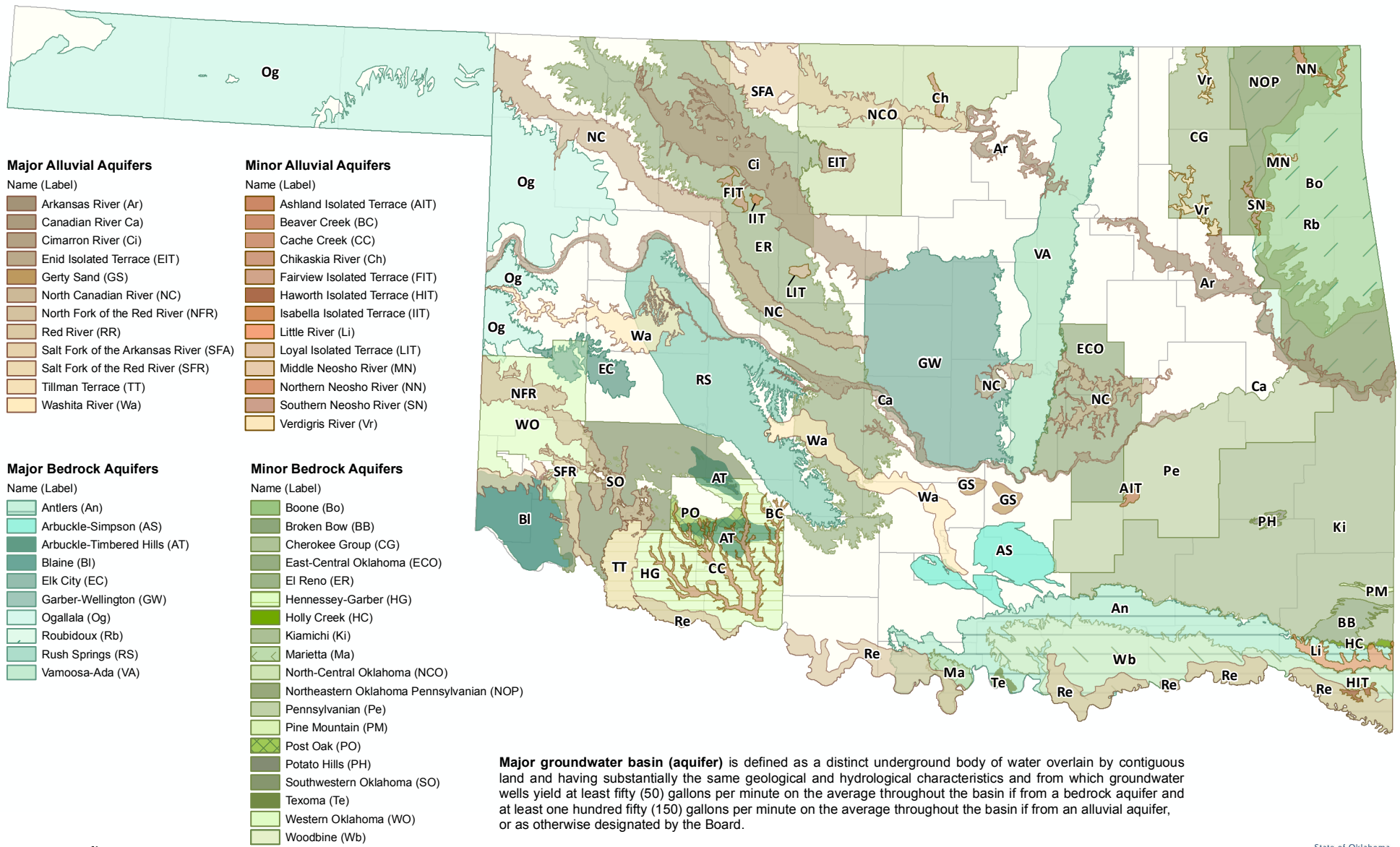


Oklahoma Groundwater Resources

Major and Minor Aquifers of Oklahoma



Major groundwater basin (aquifer) is defined as a distinct underground body of water overlain by contiguous land and having substantially the same geological and hydrological characteristics and from which groundwater wells yield at least fifty (50) gallons per minute on the average throughout the basin if from a bedrock aquifer and at least one hundred fifty (150) gallons per minute on the average throughout the basin if from an alluvial aquifer, or as otherwise designated by the Board.

Minor groundwater basin (aquifer) is defined as a distinct underground body of water overlain by contiguous land and having substantially the same geological and hydrological characteristics and which is not a major groundwater basin.

For more information visit the OWRB website: <http://www.owrb.ok.gov>. Updated: 5/3/2017

